

Current challenges

- Expanding foster care as a real alternative for out-of-home care placements
- Reviewing the vast use of kinship care
 - Using other alternatives for informal kinship care in cases without abuse or neglect
 - Supporting properly kinship carers in terms of funding, counselling, services...
- Defining the role of residential care as a specialized service for adolescents with emotional and behavioural problems
- Family intervention
 - Lack of figures despite being the more frequent intervention (family preservation and family reunification)
 - Different models of intervention depending on local authorities (counselling, social education, therapy, social work...)
 - Lack of program evaluation

CHALLENGES

1

- Addressing the increasing mental health needs of children in residential care

2

- Design individual plans and assessing outcomes

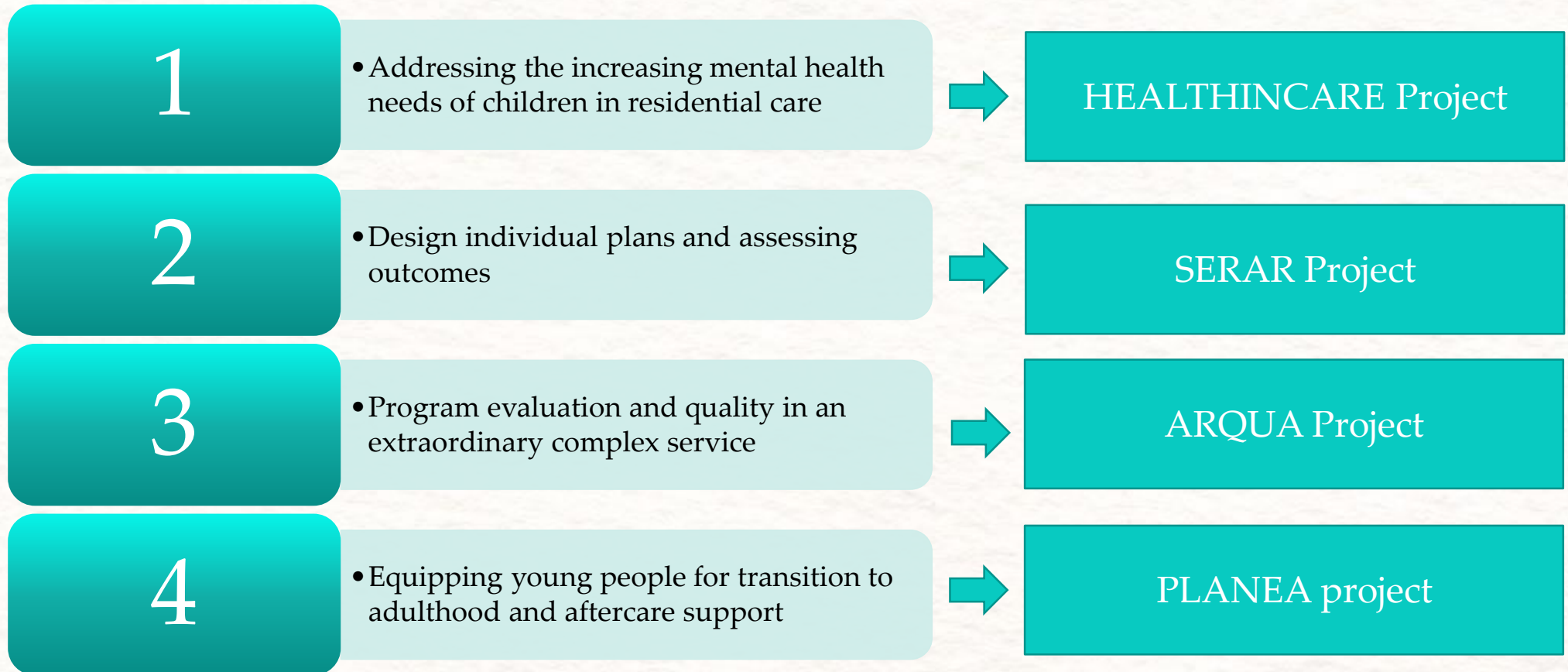
3

- Program evaluation and quality in an extraordinary complex service

4

- Equipping young people for transition to adulthood and aftercare support

CHALLENGES AND PROJECTS



National Research

- Three-year National Project 2013-2015:
 - *Mental health of children in residential care. Prevalence, coverage and effectiveness of therapeutic services*
- Objectives
 - Prevalence of children under treatment
 - Types of treatment received
 - Longitudinal outcome evaluation

THE PROBLEM

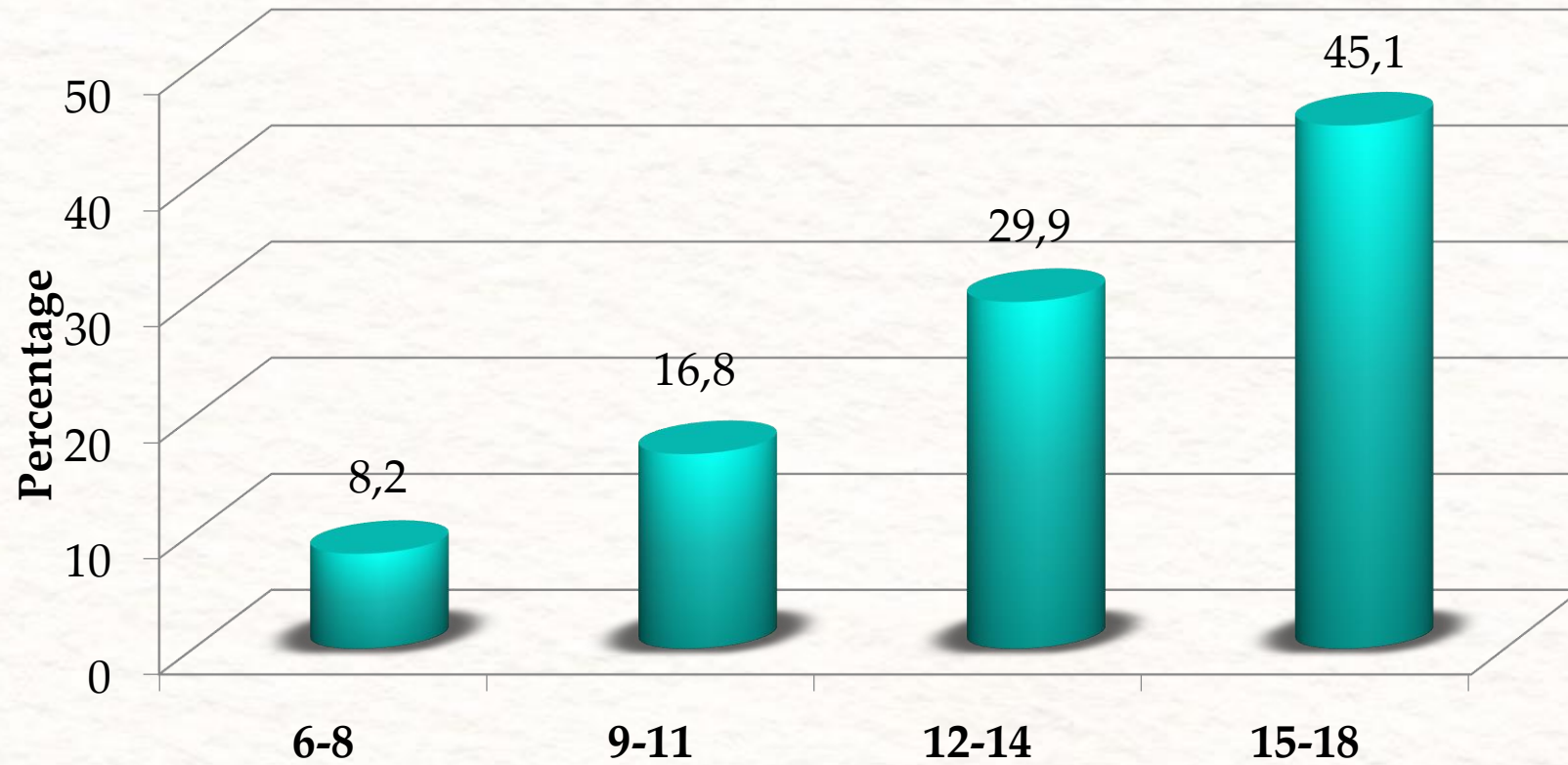
Romanelli et al. (2009)

- *“Despite the recognized importance of mental health concerns among youth in the child welfare population, there is a significant gap between the need and receipt of services for children.”*
- *A major problem is that many children in need of mental health services are not being identified and offered help. This is related to the ways that the current system identifies and refers children for mental health services.*
- *Child welfare agencies in many regions do not systematically screen children in the system for mental health problems, and among the agencies that do, only a questionable percentage report using reliable and valid screening instruments as part of their procedures”.*

Sample

- Children 6-18 years old in residential care in 6 Autonomous Communities and SOS Children's Villages
- N= 1,216
 - Age (25% 6-11) (75% 12-18)
 - Gender: 57% boys
 - Unaccompanied asylum seekers: 7.8%
 - Roma children: 12.3%
 - Immigrant family: 13%
 - Time in residential care: M= 42.3 months

Age distribution



Method

INSTRUMENTS

Data collection from key residential workers

- 1) Health: mental health problems, diagnostics, type of treatment, suicidal behaviour; substance abuse...
- 2) School
- 3) Family background, family visits...
- 4) Care system: reasons for admission, interventions, case plan, placements...

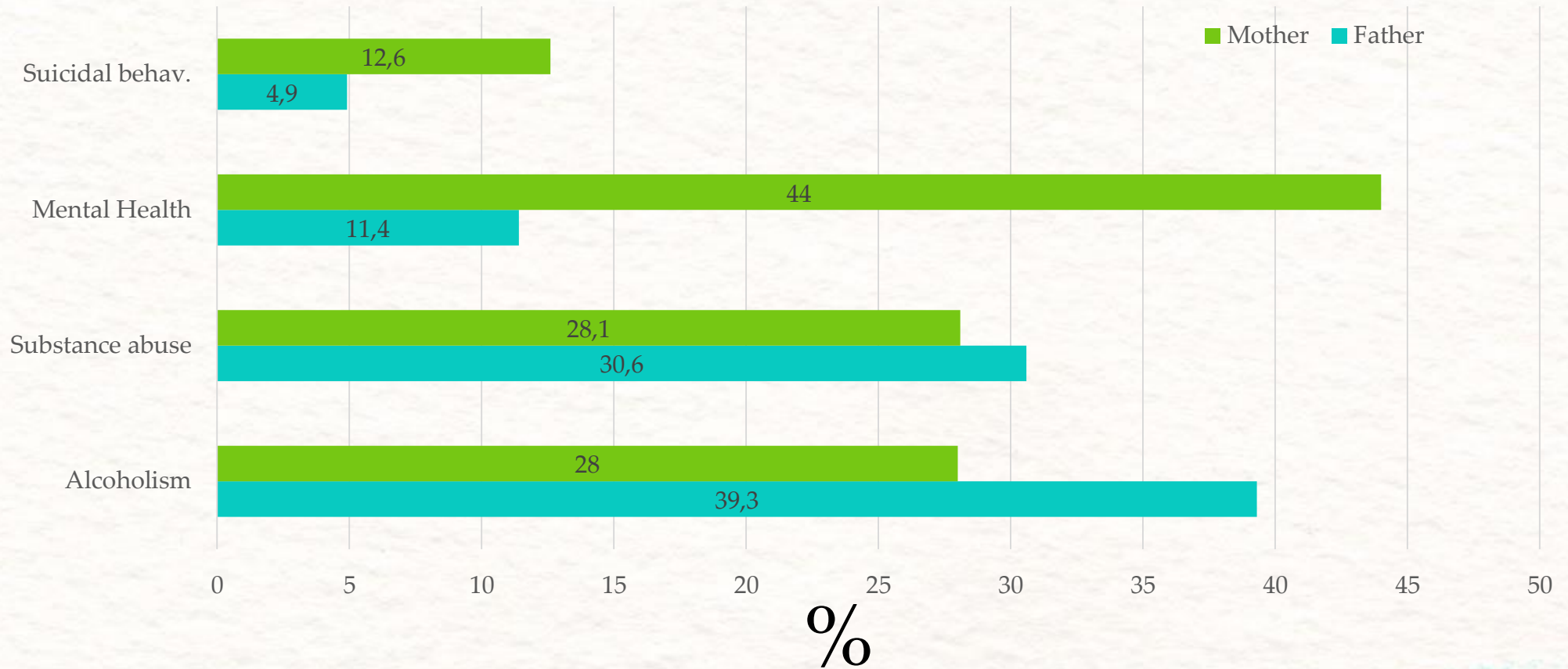
Standardized instruments

- 1) CBC-L completed by key social educator
- 2) YSR by young people (11-17 years old)
- 3) Personal Wellbeing Index by Cummins

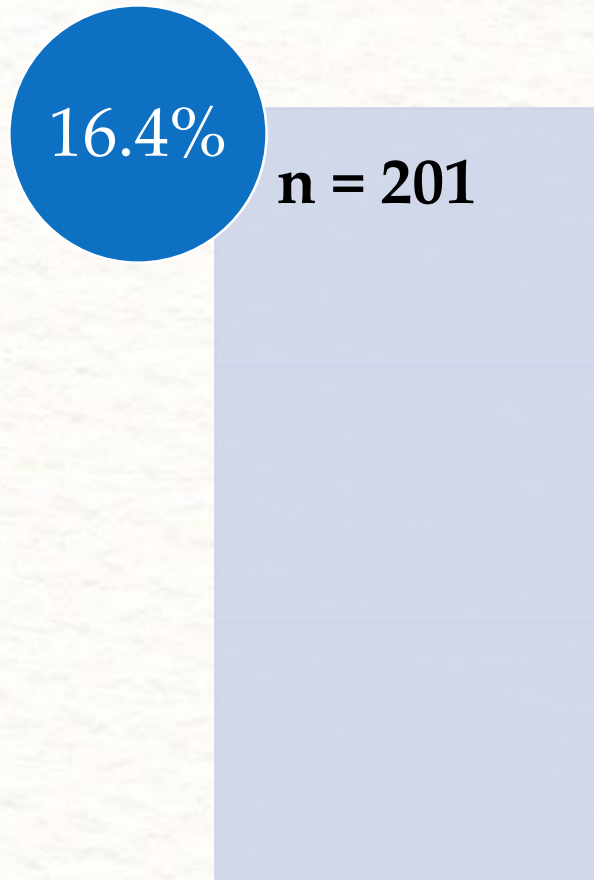
Longitudinal design

- 1) First data collection 2013
- 2) Repeated measures 2014 and 2015

Family Risk Factors



Intellectual disability

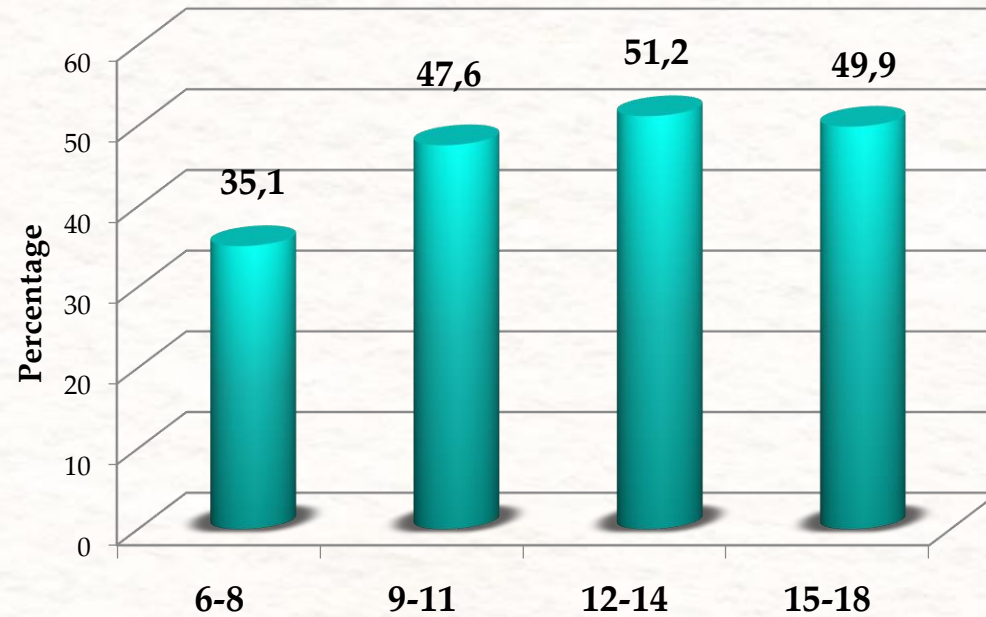


- Enormous prevalence
- 72% receive mental health treatment
- Scarce visibility in child care research
- Special needs in residential care
- (*Sainero, Del Valle, López y Bravo, 2013*)

Children in treatment

49%

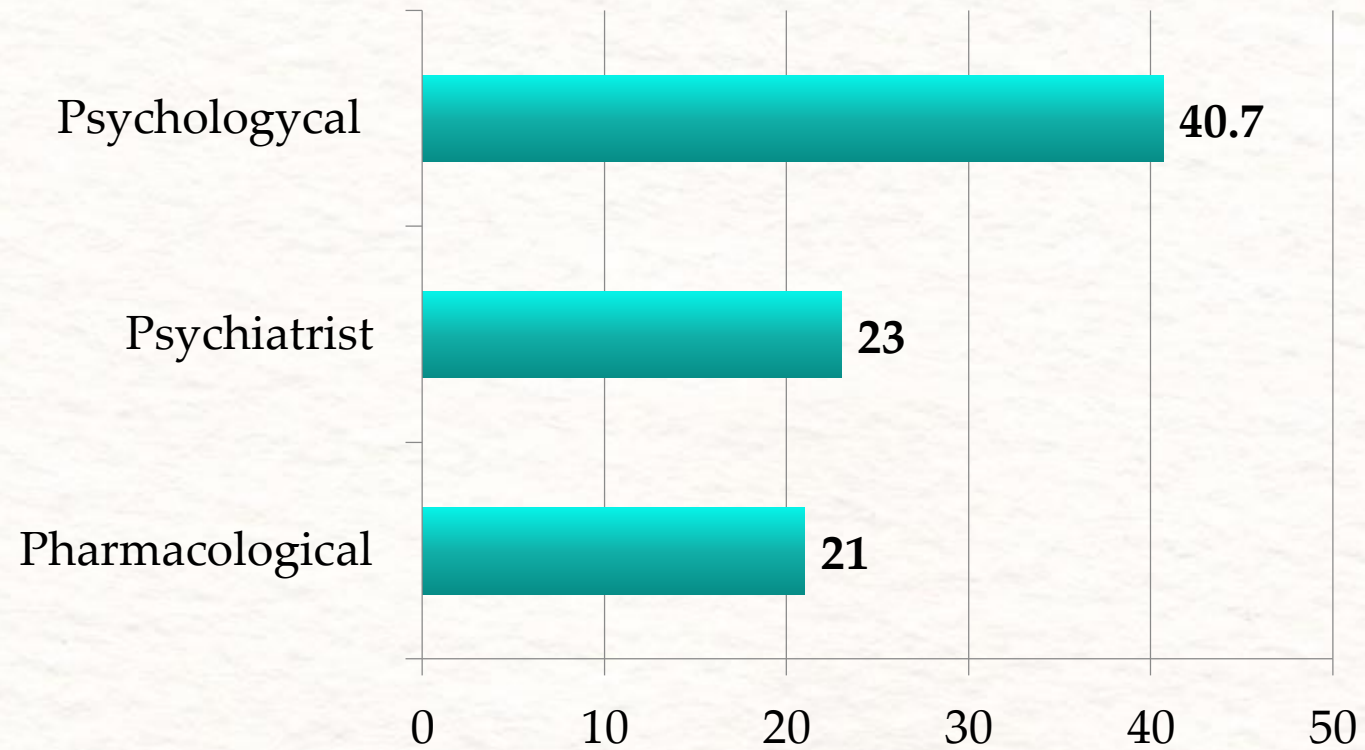
n = 585



49.9% boys

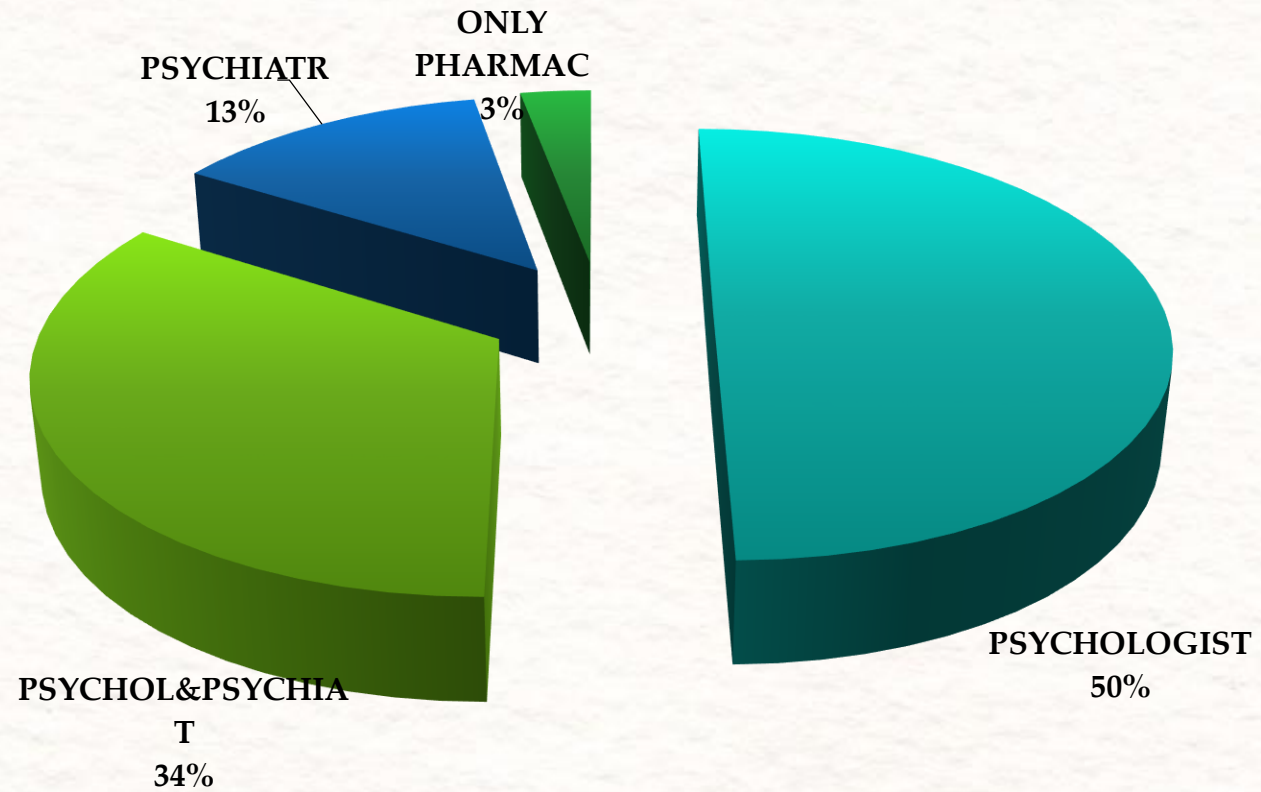
47.2% girls

Percentage* of children in treatment



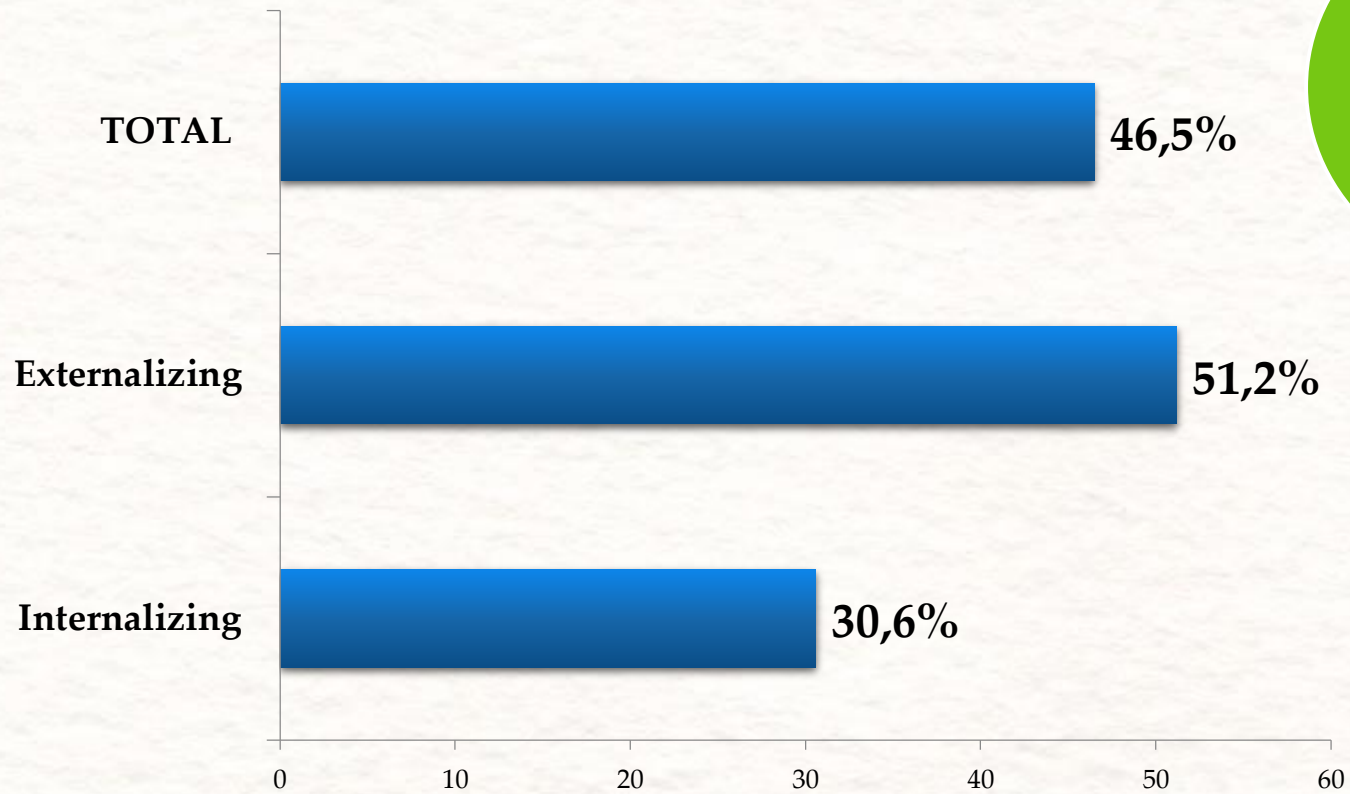
*A single child could receive more than one treatment

TYPES OF TREATMENT



CBCL: Clinical range

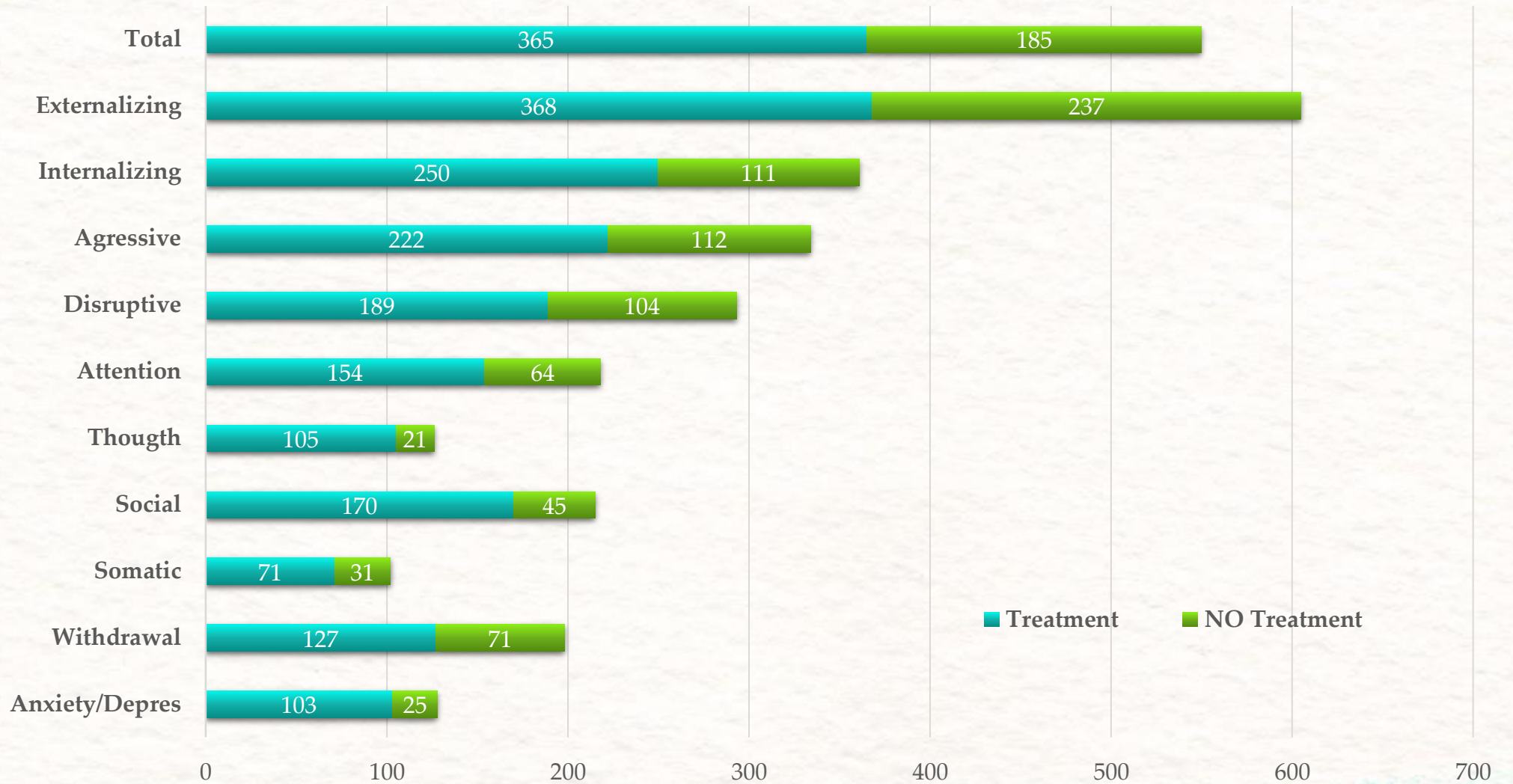
Broadband scales



61,1%

(externalizing,
internalizing
and/or total)

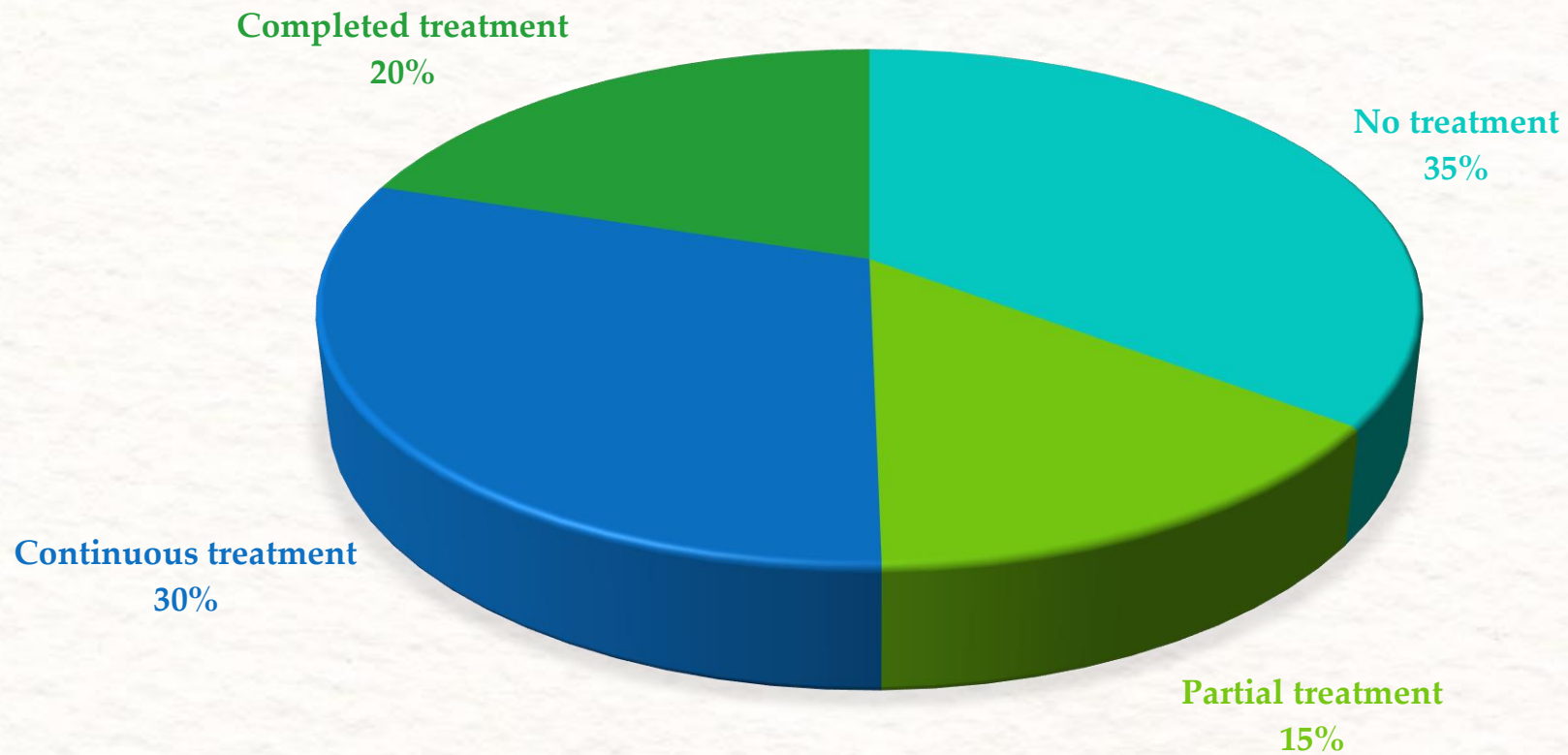
Children in clinical range by scales



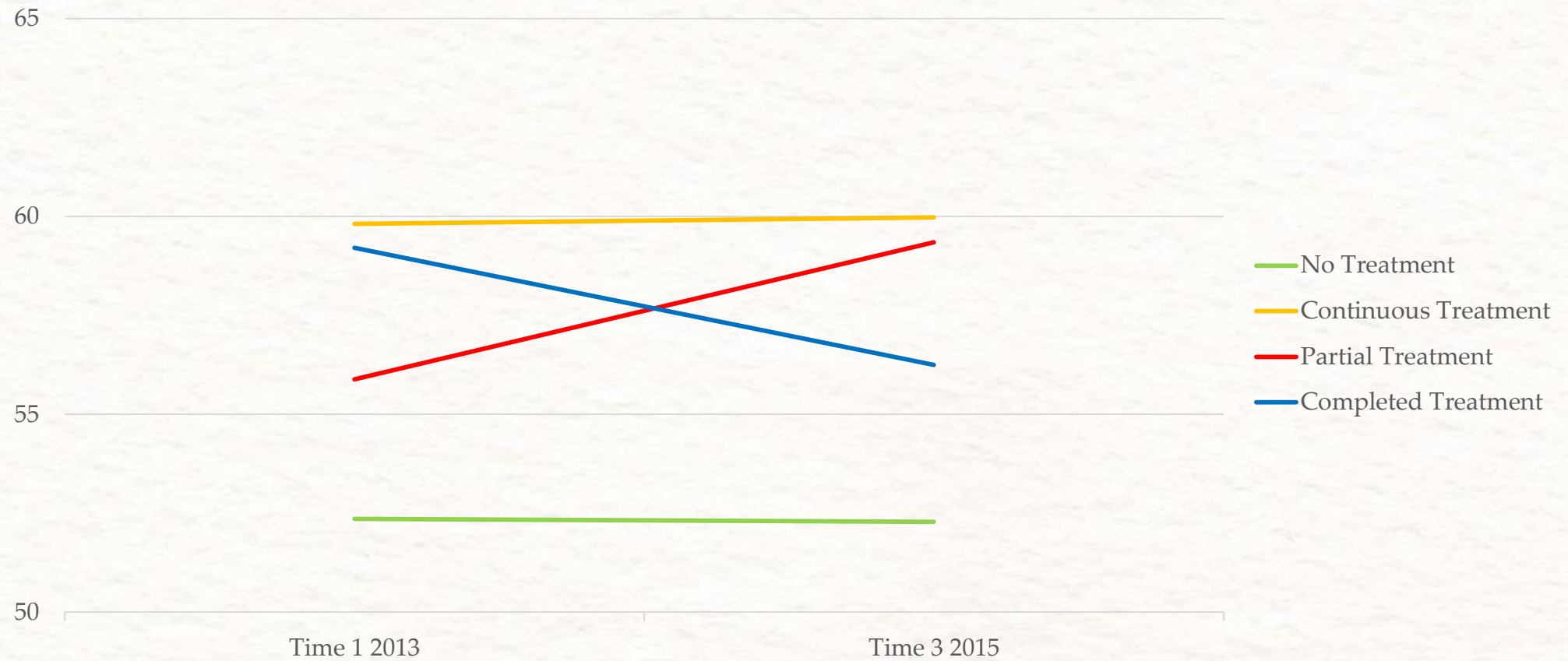
Longitudinal outcomes

- *CBCL*
- *YSR*
- *Personal Wellbeing Index (Cummins)*

Situation on mental health treatment after 2 years (n=513)



Internalizing Broadband Scale CBCL



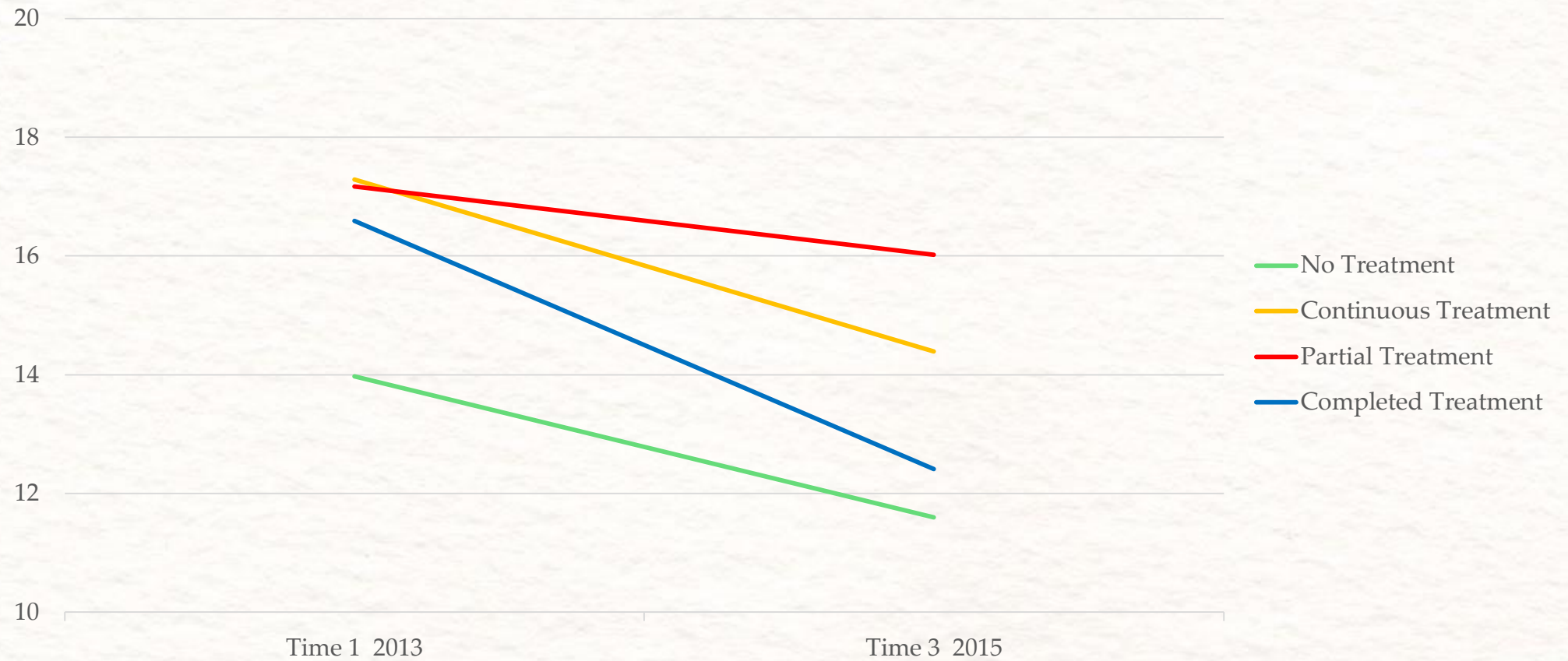
Significant differences on Mixed between-within ANOVA for repeated measures

Externalizing Broadband Scale CBCL



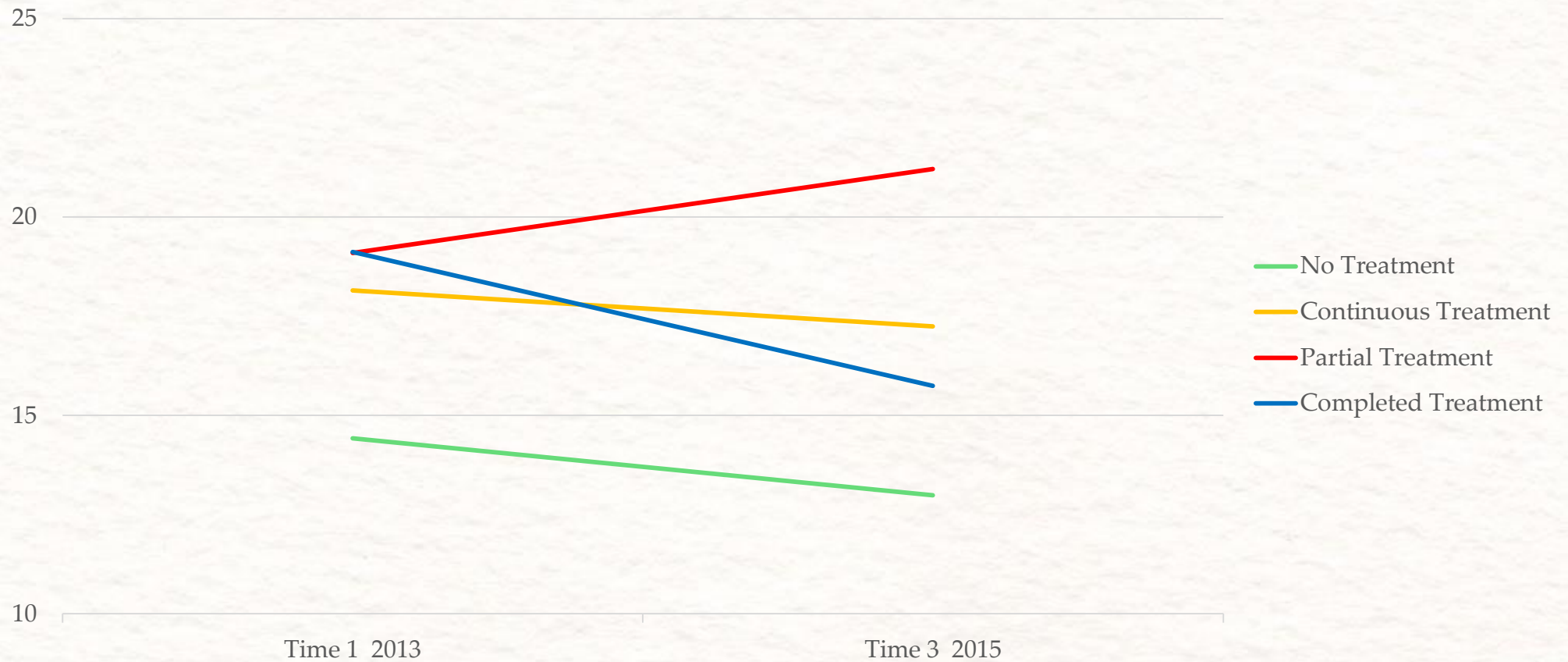
Significant differences on Mixed between-within ANOVA for repeated measures

Internalizing Broadband Scale YSR



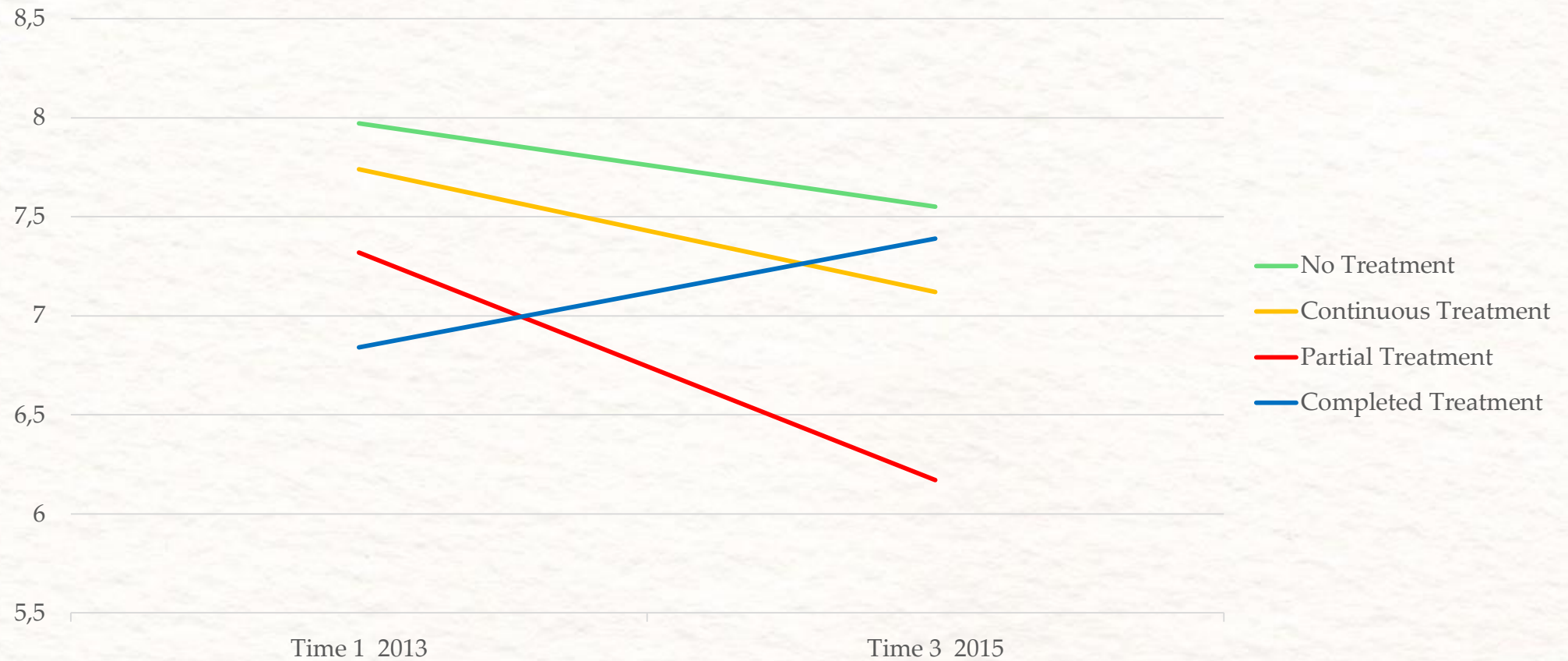
Significant differences on Mixed between-within ANOVA for repeated measures

Externalizing Broadband Scale YSR



Significant differences on Mixed between-within ANOVA for repeated measures

General Satisfaction with your life WPI by Cummins



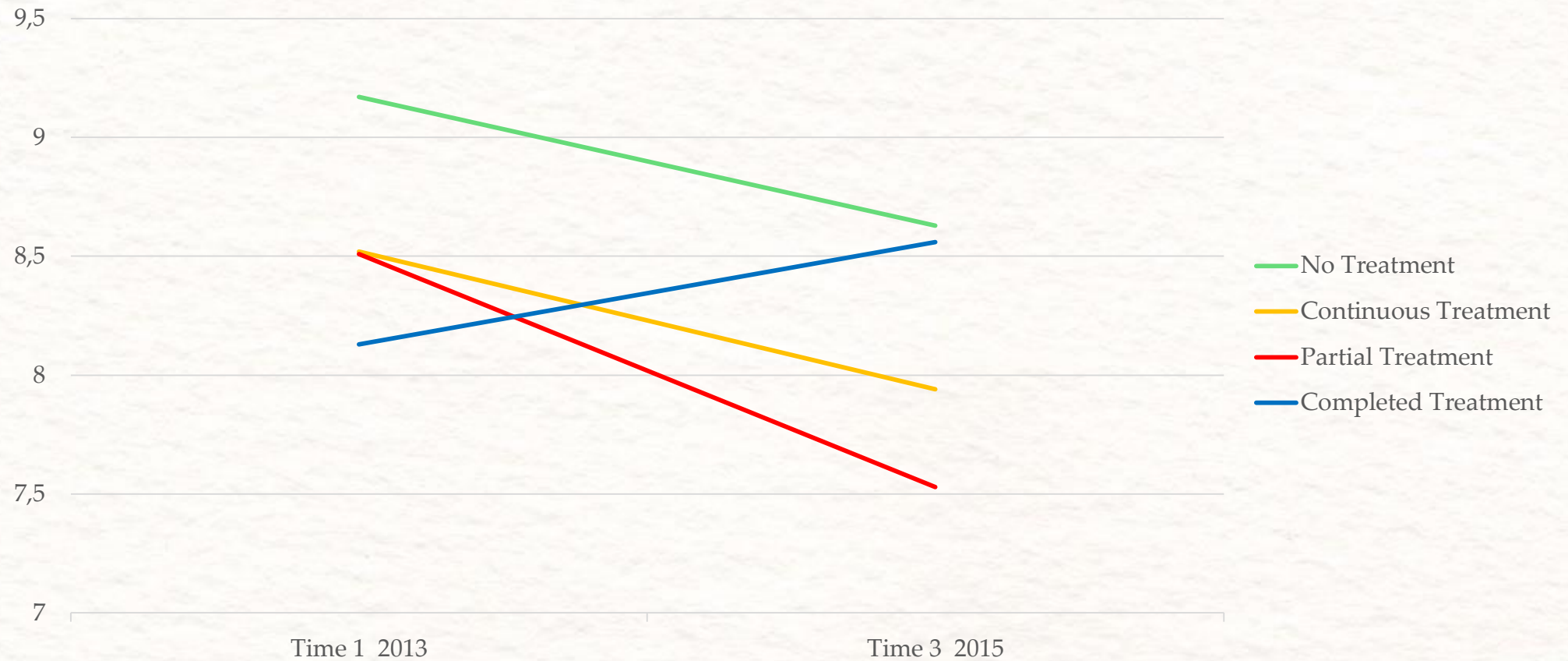
Significant differences on Mixed between-within ANOVA for repeated measures

Satisfaction with the groups you belong to



Significant differences on Mixed between-within ANOVA

Satisfaction with the way you have fun



Significant differences on Mixed between-within ANOVA for repeated measures